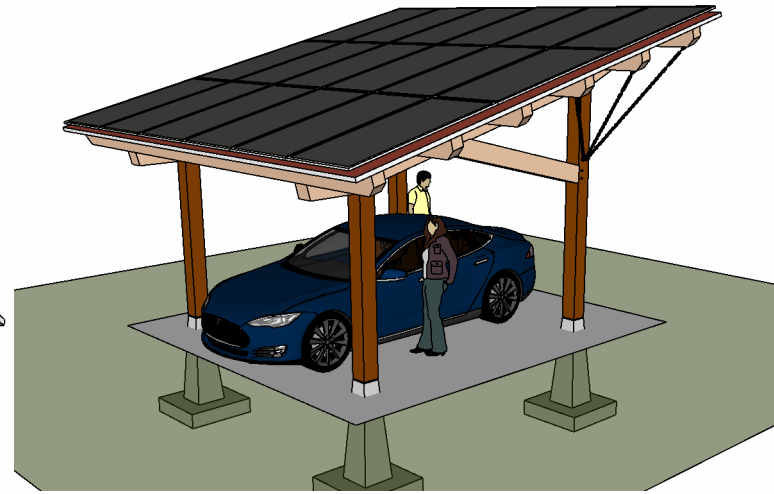


Northwest Perspective



Southeast Perspective

Note: The Solar Single can accommodate up to 18 panels (1 m. x 2 m.) in a 3x6 portrait array.

Timber List for 80 PSF GSL

- Posts are White Oak 8x8 #2 or Better.
- Braces are EWP 8x9 #2 or Better.
- Rafters are EWP 8x12 #2 or Better.
- Purlins are 6x10 EWP #2 or Better.
- Roof Decking is 2x10 EWP #2 or Better.

(NOTE for 100 PSF GSL Rafters and Purlins to be EWP #1 or Better)

Joinery Notes:

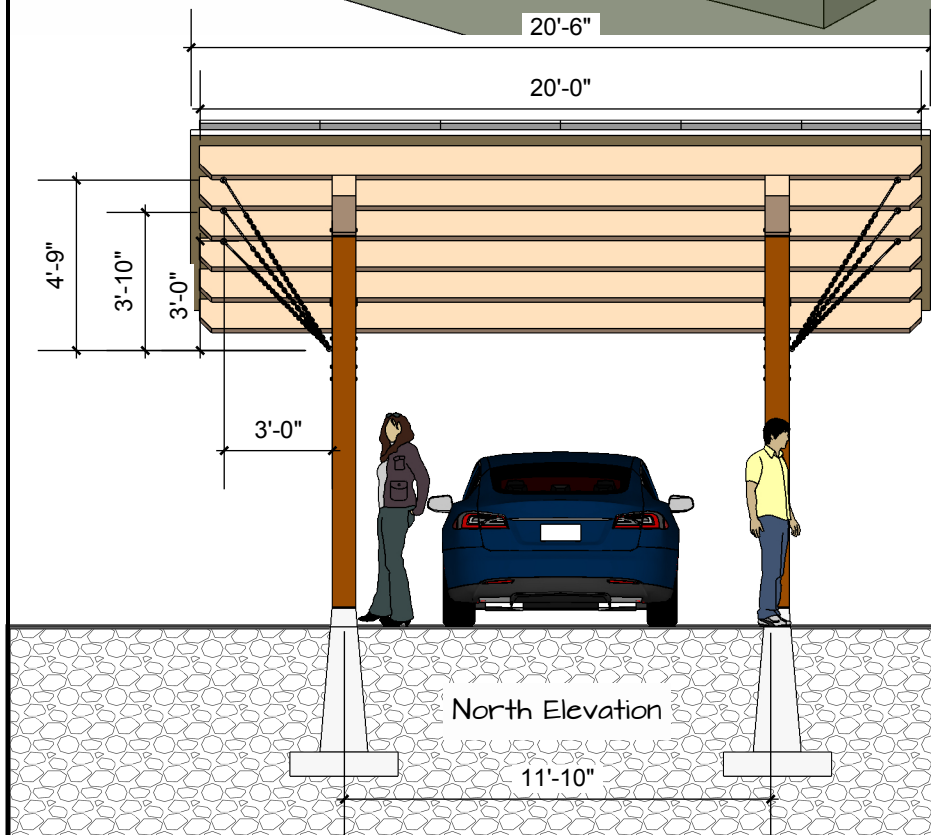
- Posts housed 1/2" with 5" long, 2" thick centered tenons with 1" hand riven hardwood pegs centered 2" off shoulder.
- Braces housed 1/2" with 5" long, 2" thick centered tenon and 1" hand riven hardwood pegs 2" off shoulder and 2", 6", & 10" back from nose.
- Transverse bracing is 3/8" chain to 1/2" eyebolt with washers both sides at post and plate. At plate chain is connected to bolt with 1/2" turnbuckle, at post with oval 1/2" threaded connecting link. See Hardware details for specs.

Purlins secured with 2 @ 11" Log Hog® fastener at each rafter.

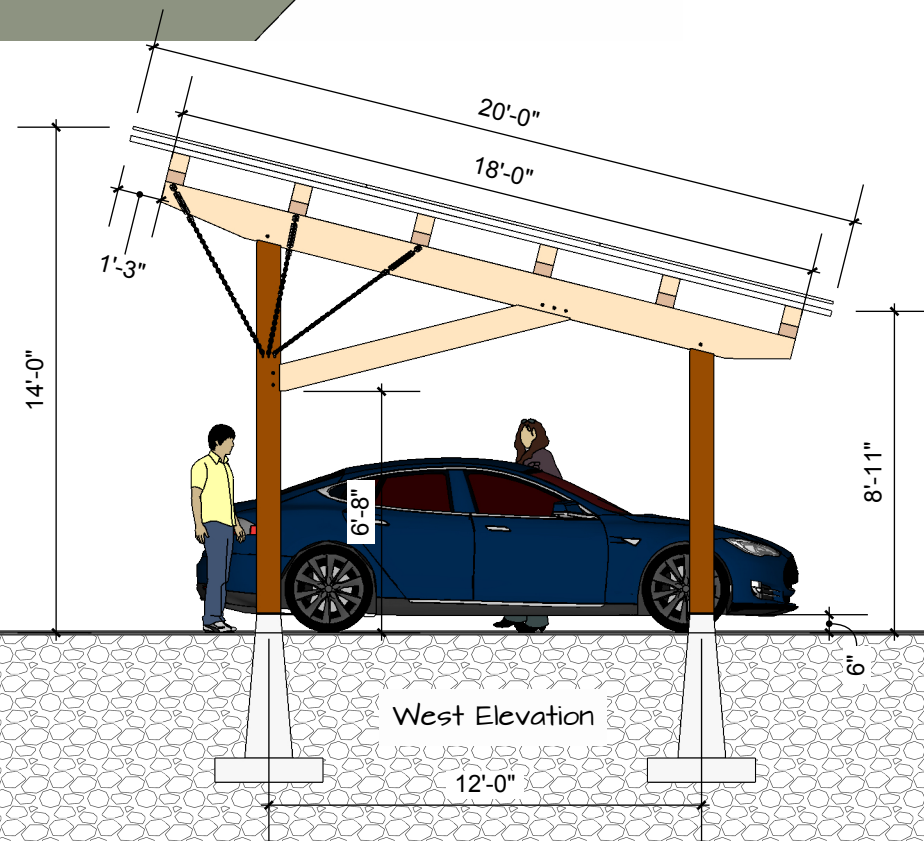
• Precast piers to be 5' tall with 32" (36" for 100 PSF GSL) square base and 7/8" threaded rod cast in place with minimum 8" embedment. Post secured with TimberLinx® A475 connector and 1/2" Lexan® plate for capillary break.

• Roof deck secured with 3 @ 16d galvanized framing nail at each purlin with Titanium® underlayment and standing seam drip edge and roofing of stock color.

• Solar panels are mounted on racking system secured to standing seam roofing ribs.



North Elevation



West Elevation